

3H Linen

Happy Healthy Homey linen

COLOR GUIDE





The pictures marked with this icon were received from our clients.

We didn't change the colour on these pictures, so that's why it may look different here.

The fabric colour is the same.

As you know, the colour you see in a photo depends on the device you shoot the photo with, the time of day, the light in the room, and other factors.

TABLE OF CONTENTS

NEUTRAL COLOURS

White	5
Off-white	6
Cream	7
Natural	8
Stone Grey	9
Dim Grey	10
Dark Grey	11
Charcoal	12
Black	13

GREEN AND BROWN

Tawny Brown	15
Moss Green	16
Sage	17
Asparagus	18
Basil	19
Forest Green	20

BLUE COLOURS

Royal Blue	22
Azure Blue	23
Aquamarine	24
Peacock Blue	25
Sky blue	26

RED AND YELLOW SHADES

Pastel Pink	28
Dusty Rose	29
Dusty Pink	30
Mustard Yellow	31
Merlot	32

The background of the image is a solid light beige color. It features a pattern of thin, white, wavy lines that flow across the page in various directions, creating a sense of movement and depth. The lines are irregular and organic in shape, resembling topographical contour lines or perhaps the texture of a natural material like wood or stone.

NEUTRAL COLOURS



WHITE



Our White is a vivid, optical white. Of our neutrals, this is clearly the brightest. You can compare it to fresh snow on a sunny, winter day. It belongs on a crisp, cool colour palette.





OFF-WHITE



Our Off-White is warm and, when compared to an optical white, it has a slight yellow hue. If this is the only white in the room, the yellow hue will not be obvious, but it will create warmth.





CREAM



Cream is a warm, inviting colour. It pairs beautifully with orange and brown shades, giving your room a warm, natural feeling. (The yellow tones are obvious, so consider our Off White if you want to avoid yellow.)





NATURAL



Natural is one of our most beloved colours. It comes in 2 tones: for the curtains and for the bedding. On our Natural curtains, you'll notice beautiful interwoven, un-dyed white threads. On bedding, the un-dyed fibers are less apparent, giving the fabric the appearance of a solid colour.





STONE GREY



Our Stone Grey is cool and neutral, pairing beautifully with blues, greens, and pinks. If you're looking for a monochromatic design, try pairing Stone Grey with Dim or Charcoal tones.





DIM GREY



If you want a deep, dark colour, you need our Dim Grey. This shade has a slight blue hue.





DARK GREY

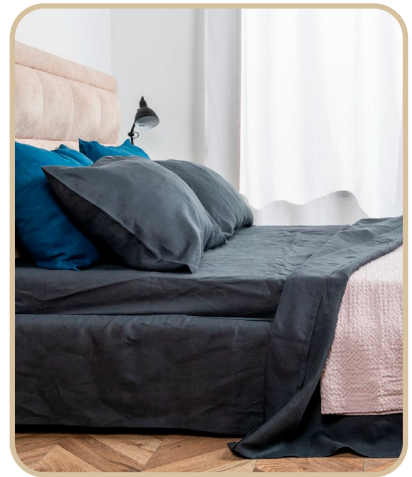


For rich tones, try our Dark Grey colour, known for its subtle purple overtones.





CHARCOAL



Charcoal Grey is the darkest of the greys in our palette. This shade, which lands between black and grey, pairs perfectly with blues, whites, and most greens. To create a warm feeling, pair Charcoal Grey with yellow, pink, or orange.

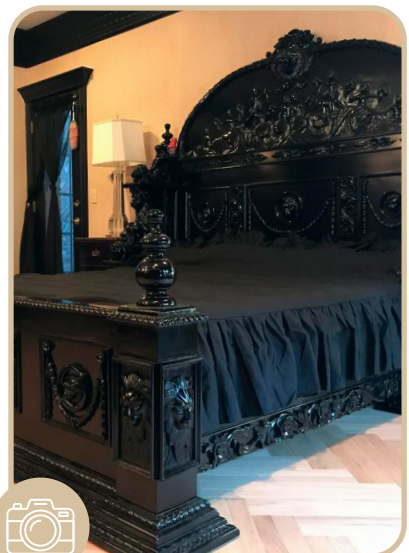
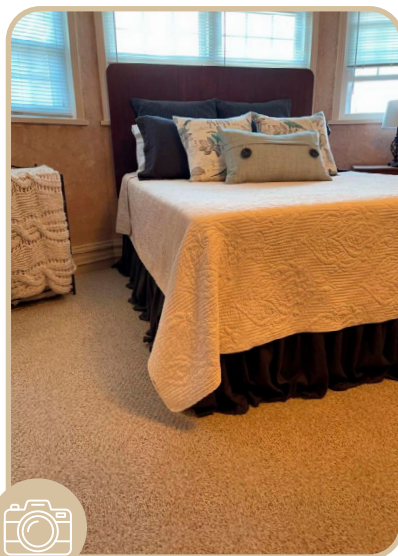




BLACK



Our Black is a deep, luminous, achromatic color.





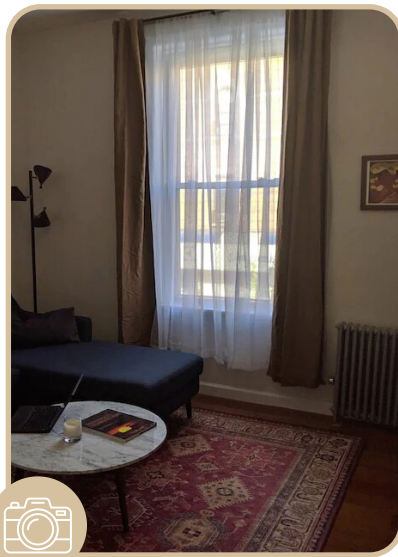
**GREEN
AND BROWN**



TAWNY BROWN



Tawny Brown is light, warm, and inviting. It creates a calm, relaxing vibe and plays beautifully off orange, off-white, darker brown, and mustard tones.





MOSS GREEN



Moss Green is vibrant, guaranteed to attract attention. Its leaf-like tones pair effortlessly with wood and white colours, giving your indoor space an outdoor feeling.

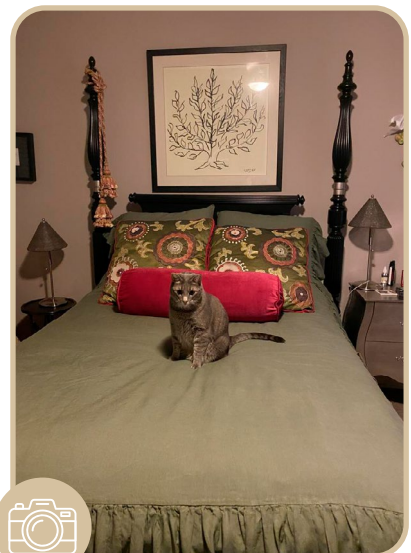




SAGE



Sage Green perfectly combines green and grey. It's a muted colour, evocative of classical and traditional spaces.





ASPARAGUS



Asparagus is similar to Sage Green, but Asparagus evokes more soothing, relaxing feelings.





BASIL



For a classic green, try Basil. Basil is one of the darkest greens we carry.





FOREST GREEN



Forest Green, also quite dark, has a more cheerful, bold feeling than Basil.



The background of the image is a solid light beige color. It features a pattern of thin, light-colored, wavy lines that flow across the page in various directions, creating a sense of movement and depth. The lines are more densely packed in some areas and more sparse in others, giving the background a textured, organic feel.

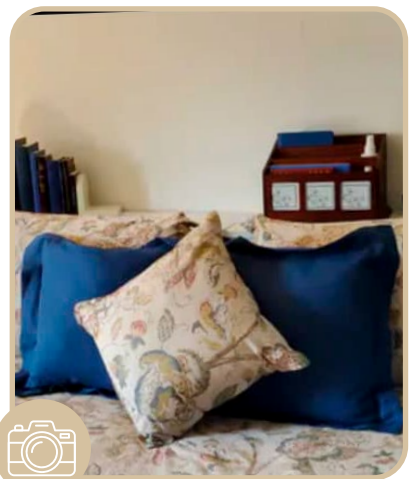
BLUE COLOURS



ROYAL BLUE



Royal Blue — one of the darkest shades in our palette – could be called midnight blue.





AZURE BLUE



Our bright, tropical Azure Blue plays well with muted yellow and mustard tones.





AQUAMARINE



Aquamarine, also called sea blue, invokes memories of sunny days on sandy beaches.

Aquamarine perfectly combines blue and green to create a shade similar to teal (though it's not deep teal) and perfect for beach house style.





PEACOCK BLUE



Just like the bird it was named after, our Peacock Blue is bright and eye-catching.

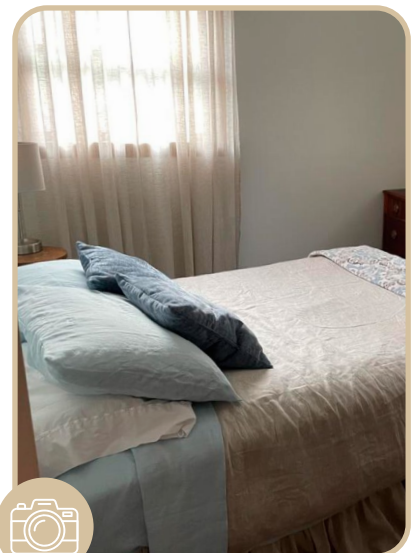




SKY BLUE



Sky Blue is exactly what you think it is. Picture a clear sky on the first day of spring and you understand this shade.



The background of the image is a solid light beige color. It features a pattern of thin, white, wavy lines that flow across the page in a fluid, organic manner, creating a sense of movement and depth. The lines vary in thickness and direction, some curving gently while others are more pronounced.

RED AND YELLOW SHADES



PASTEL PINK



Pastel Pink is a pale, baby pink. It's brighter than Blush. Pastel Pink pairs especially well with every shade of grey.

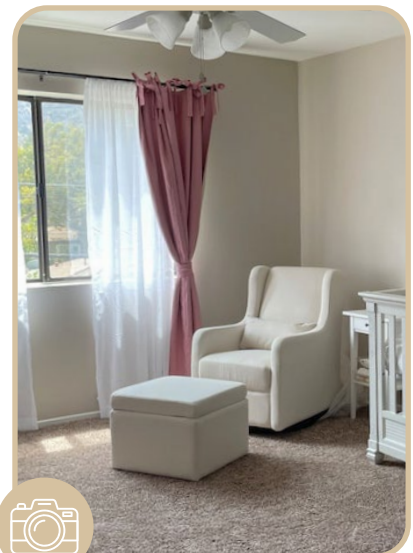




DUSTY ROSE



For a calming vibe, use our Dusty Rose. If it's too calm, add yellow accents, and watch the room's mood elevate to happy and calm.





DUSTY PINK



Dusty Pink, created by adding just a drop of grey to pink, is a calming, noble colour.





MUSTARD YELLOW



Mustard Yellow, with its muted golden tones, harmonizes with neutrals, greys, blues, greens, and pinks.





MERLOT



Merlot — reminiscent of the deep tones of red wine, is a rich, dark colour.





3H Linen

Happy Healthy Homey linen

3hlinen.com